

Photographing Flowers

By Roger Heng

Elements to image

- 1. Camera
- 2. Field Problems
- 3. Composition

Camera

- 1. SLR cameras with a several different lens to photograph flowers.
- I use a 70-210 mm lens
- 2. Flower images can be taken with point and shoot cameras. Many have setting for flowers.
- 3. Close-up lens, extension tubes, or tele converter can be added to lens. These allow the magnification of the flower or parts of the flower. Close-up lens come in sets

Close-up lens on 55 mm

- Diopres Magnification
- +1 0.05
- +2 0.1
- +2.5 0.125
- +3 0.15
- +4 0.2
- +7 ?
- +10 0.5
- You can add lens together.

Extension Tubes



Extension tubes come in sets or in the Canon and Nikon individual tubes can be purchased.

The use of the tubes is that the distance from the back of the lens to the film/digital sensor surface is longer. This allows you to take photographs at shorter distances to the subject.

Sizes on tubes vary from 12mm , 20 mm , to 36 mm.

My set is manual because in focusing the distance is so small it is best done manually.

Tele converter



Tele converter is an additional glass lens for increased magnification. They come in sizes of 1.4 and 2x.

Camera

- 4. I have used a focusing rail.
- 5. The bellows are an option.

Focus Rail



Focus rail allows very fine focus to and away from object. Also side wise. This is an excellent way to focus on a non moving object.

Bellows



Bellows can be used in taking flower images. They do not work well in the field. One could use a bellows.

Tripod

- I have found it is all most impossible to get good consistent flower images without using a tripod.
- The flowers are many levels and it is hard to get all of them in focus.



Level 1 petals

— Level 3 stigma
Level 2 stamen

Manual or Auto

- I shoot both.
- When shooting auto, I shoot, focus on a leaf or stem, and then refocus back on flower. I also change f stop.
- Always check your white balance.
- I have used shutter priority when wind has been blowing.
- Manual allows me better control of the fine focus.

Wind

- Wind is a problem for flower photographers.
- Maybe?
- I have used pieces of cardboard to block the wind.
- The making of a diffusion tent.
- Or purchase of a diffusion tent.

Wind



30" x 30" \$ 139



Purchase \$50 Roger made his for \$35

Field

- Take multiple images.
- Bracket

Composition

- Get down to level of the flower
- Portrait of a single flower on stem
- Shoot down on flower
- Make a family portrait of flowers
- Make a landscape with flowers
- Include person and get release.





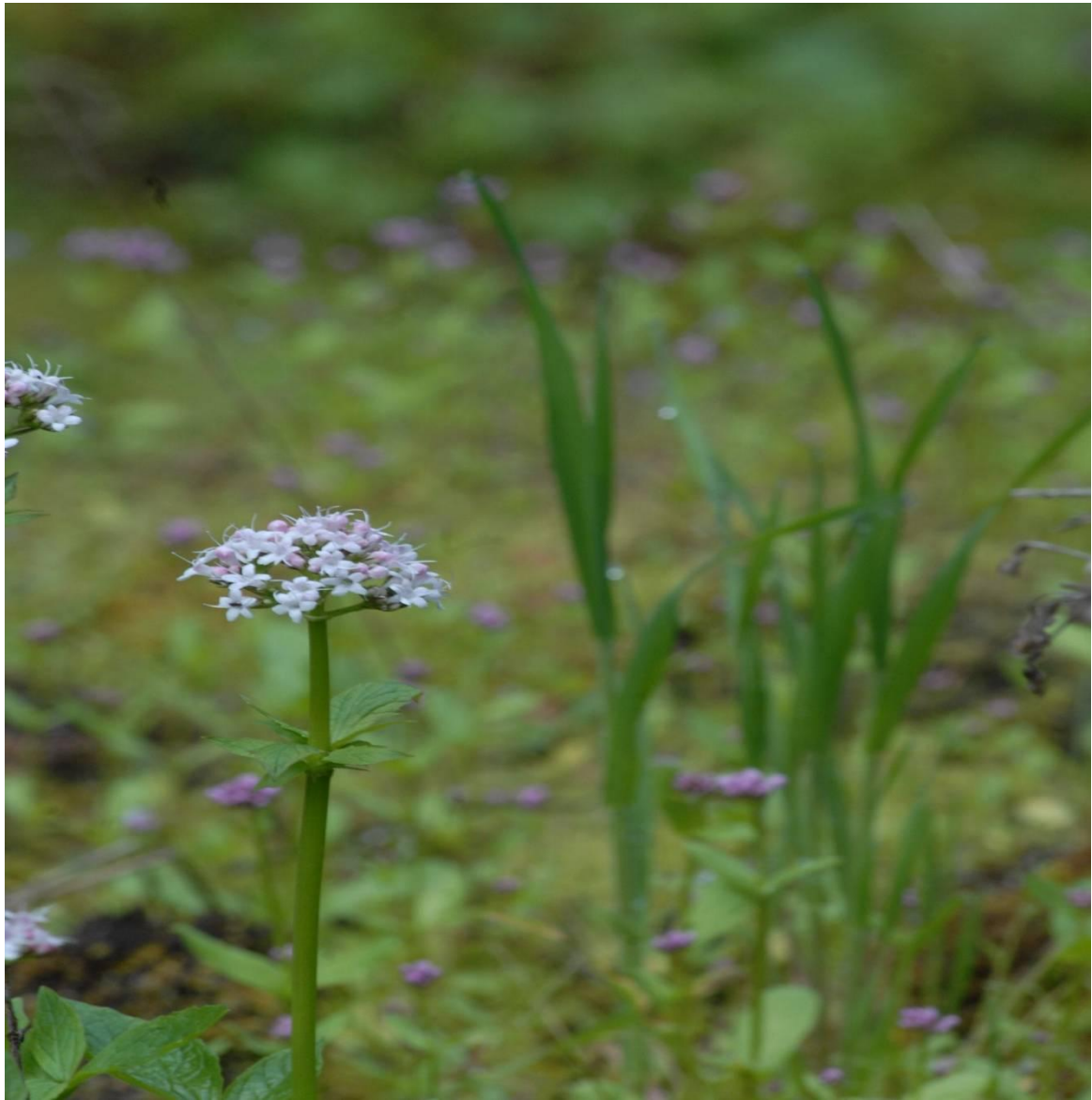










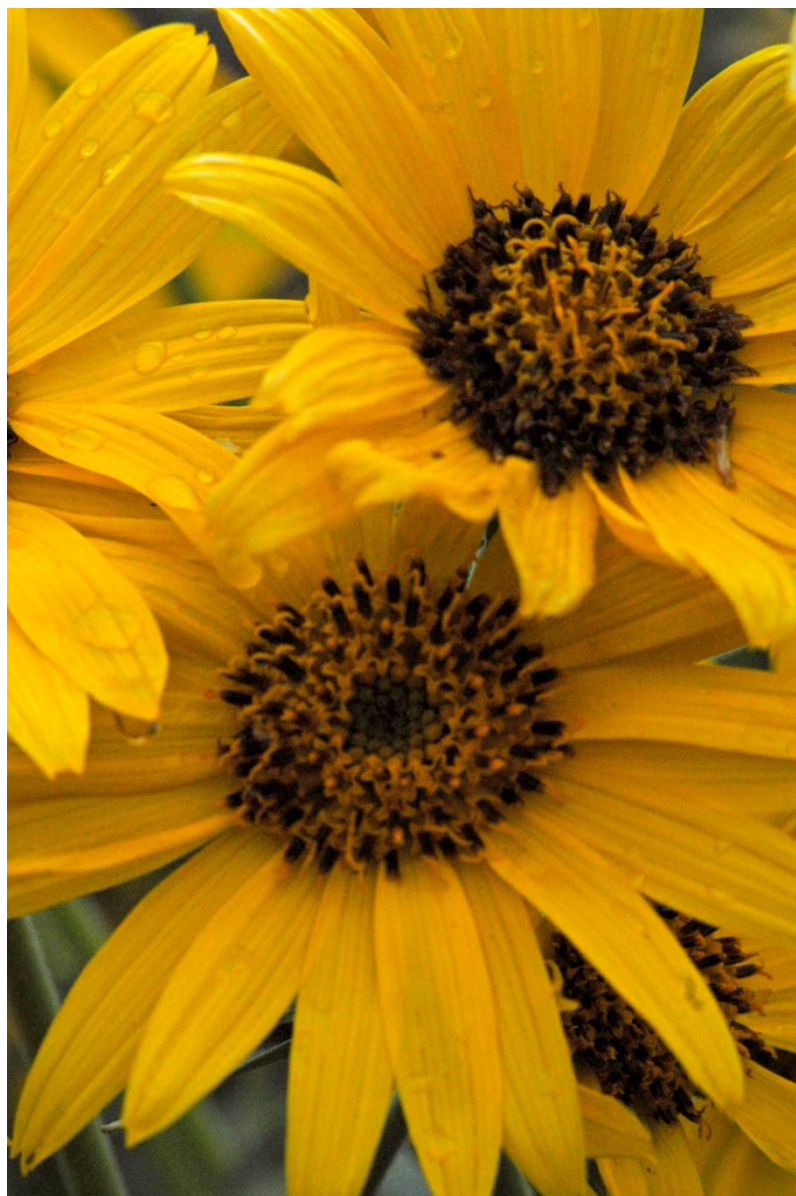












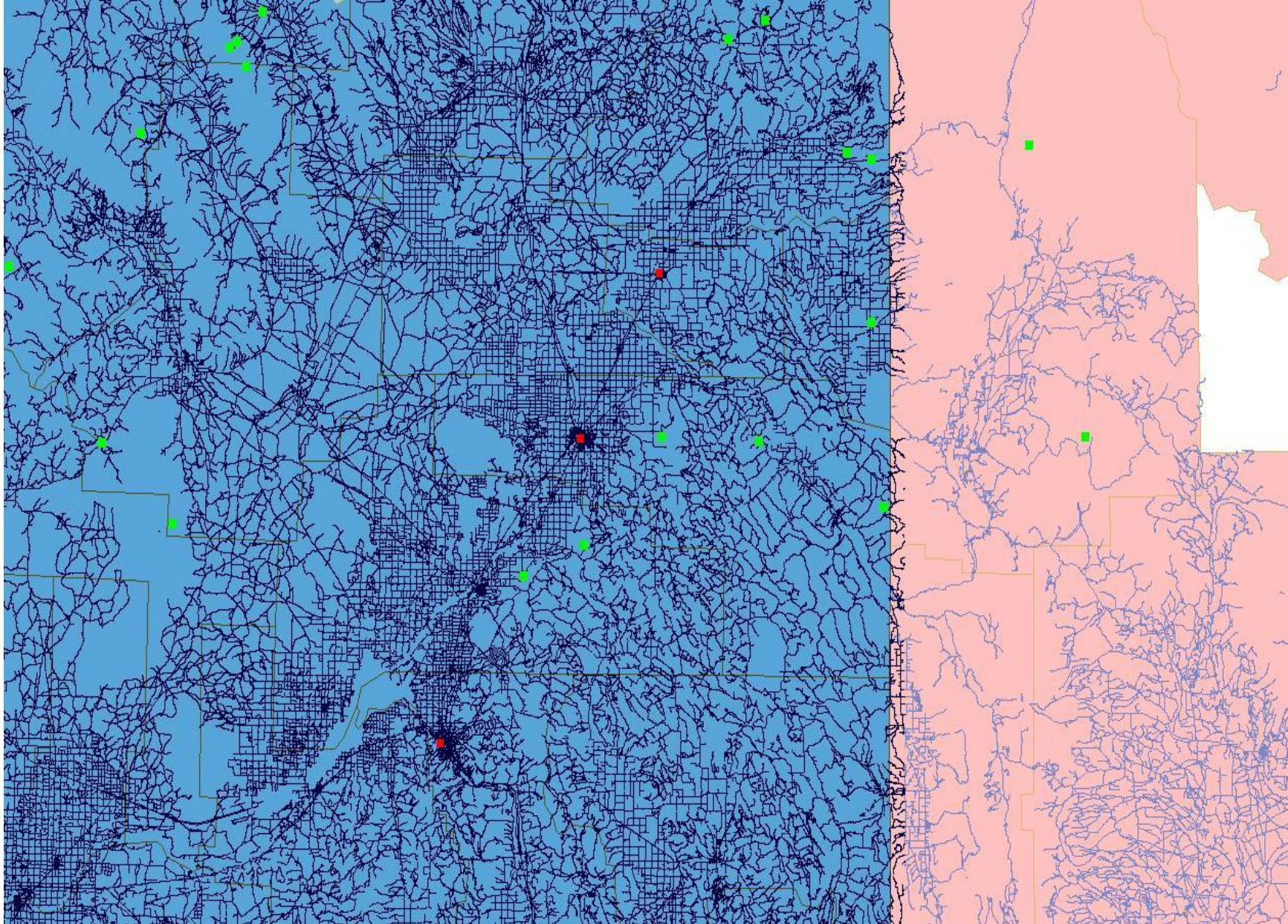






Where to take flower photographs?

rs\XYFlowers\$.shp								
Location	Latitude	Longitude	Flowers	Spring	Summer	Fall	Winter	URL
Big Springs	44.2957	-111.5719	Flowers	x	x	x	x	http://www.visitidaho.org/thingstodo/outdoor-recreation/big-springs-nature-trail.aspx
Blacktail Reservoir	43.498799	-111.775707	Flowers					http://www.usbr.gov/dataweb/html/ririe.html
Blizzard Mountain Ski Area	43.303	-113.3333	Flowers		x			
Bruneau Dunes State Park	42.5341	-115.4153	Flowers					http://www.visitidaho.org/thingstodo/parks/bruneau-dunes-state-park.aspx
BYU Idaho	43.4916	-111.4657	Flowers					http://www.byui.edu/
Cave Falls, Yellowstone Park, from Idaho	44.0841	-110.595	Flowers	x	x	x	x	http://www.worldisround.com/articles/331412/index.html
Charcoal Kilns	44.332321	-113.082275	Flowers	x	x	x	x	http://www.pubcrawler.com/Template/dsp_landmarks_zoom.cfm?latID=10494
Copper Basin	43.80685	-113.87948	Flowers	x	x	x		http://www.forwolves.org/ralph/alphabetic/copperbasin.htm
Craters of Moon National Monument	43.46089	-113.56567	Flowers	x	x	x	x	http://www.nps.gov/crmo/
Driggs	43.728933	-111.106324	Flowers	x	x	x	x	http://driggs.govoffice.com/
Flagg Ranch/Grassey Lake Road (Ashton, ID)	44.055395	-111.105595	Flowers					http://home.comcast.net/~ratburt/web/falls/yellowstone/bechlerarea.htm
Gilmore	44.2732	-113.1611	Flowers	x	x	x	x	http://www.idahobyways.gov/byways/sacajewea.aspx
Grand Teton National Park	43.5	-110.4203	Flowers	x	x	x	x	http://www.nps.gov/grte/
Hahn	44.222	-113.1303	Flowers					
Harriaman State Park	44.3334	-111.4503	Flowers					http://parksandrecreation.idaho.gov/parks/harriman.aspx
Hell's Half Acre -Rest Area I-15	43.2152	-112.2127	Flowers					http://www.visitidaho.org/thingstodo/view-attraction.aspx?id=30870
Idaho Falls	43.28	-112.0203	Flowers					http://www.idahofallschamber.com/
Meadow Lake	44.2602	-113.1851	Flowers					http://www.hikercentral.com/campgrounds/116070.html
Mount Borah	44.0814	-113.4649	Flowers					http://www.idahoacimbingguide.com/id118.htm
Red Rock Lakes National Wildlife Refuge, MT	44.5982	-111.7213	Flowers					http://www.fws.gov/redrocks/
Victor	43.361	-111.0641	Flowers					http://www.victorcityidaho.com/
Warm River Campground	44.0714	-111.1842	Flowers					http://yellowstoneteton.org/thingstodo/parktrails/trailbike/vrmRvr.html





Summit Creek Campground is one of the better sites for flower photographs. I found 8 different kinds of flowers. The wind blew in the morning. The evening was a good time to photograph. The Summit Reservoir a couple miles up the road has some excellent flowers at a pull out. You can photograph the tropical fish in the Barney Hot Spring across the road. You will need a polarizer and no wind.



Powered by Helicon Focus (www.HeliconFocus.com)

Sample: **Fly eye**
Resolution: 325x217
Number of images: 37
Copyright: Charles Krebs, 2005